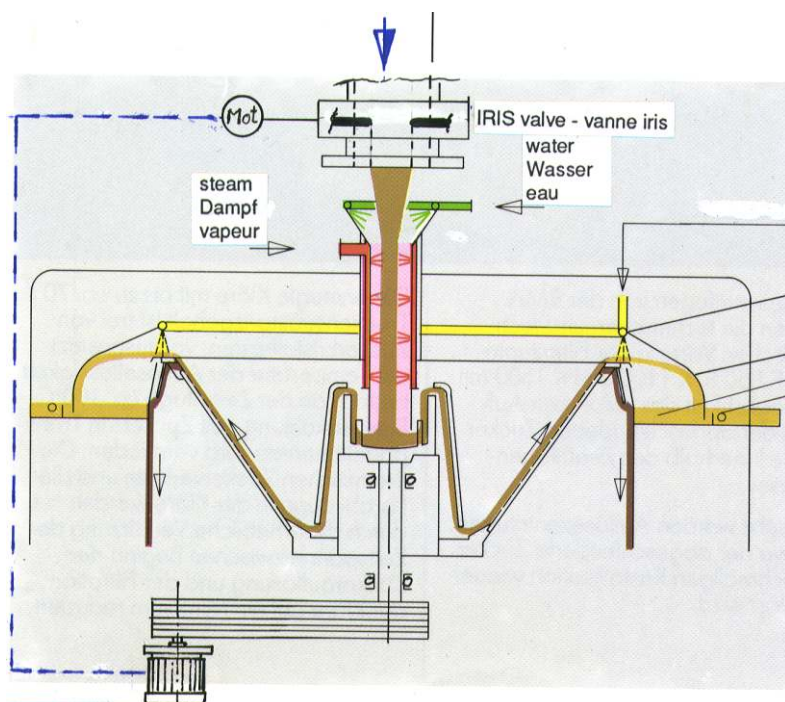
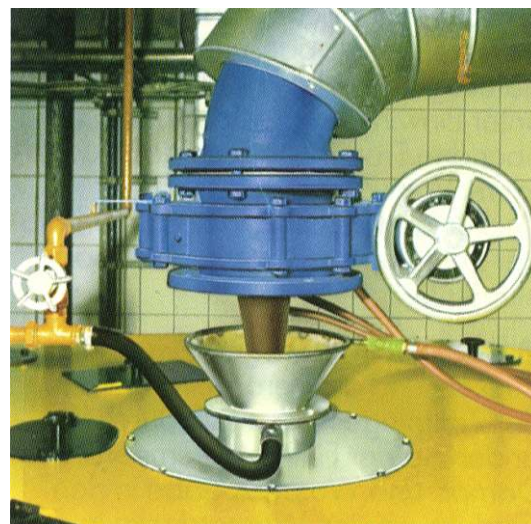


Flow Regulation of Masecuite into Konti-Continuous Centrifugals in the Sugar Process Industry. EGGER Iris flow regulation valves.



For this application in the sugar industry, Emile Egger & Co have supplied over 6000 Iris valves world wide over a period of 30 years.



The flow into the centrifugal is controlled and regulated by an adjustable EGGER Iris Flow Control valve.

Operation of the valve can be either manually or electrically controlled. When the valve is electrically operated, it is controlled by the amount of current absorbed by the electric motor which drives the sugar centrifugal.

Dat. 03.02.1999 - Gt

Ersetzt / Remplace R-896



Emile EGGER & Cie SA
Cressier/NE (Suisse)

Mannheim (D)
Lyon (F)

London (GB)
S. Sebastian (E)

Milano (I)
Bruxelles (B)

Graz (A)

IV - 01 gb / 11