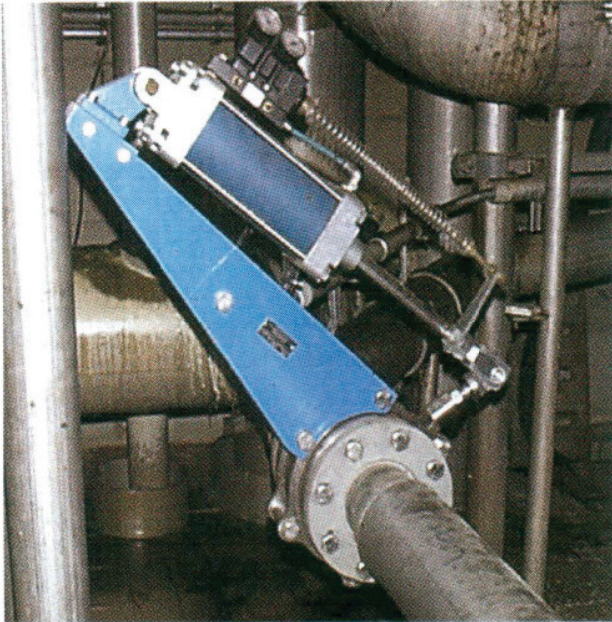


The valve was worked out for application in stock preparation installations and works successfully for over 40 years in the paper industry.



Main advantages:

Precise and process stable control characteristic curve

Wide control range

Solid construction for regulating

Self-cleaning segments

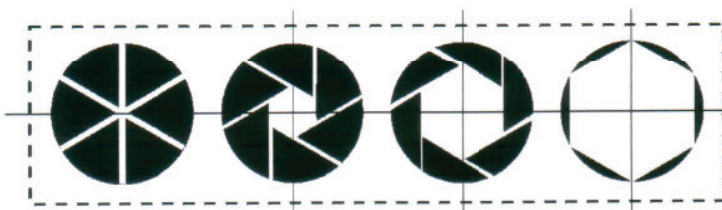
Wear reducing flow axis

Easy to maintain

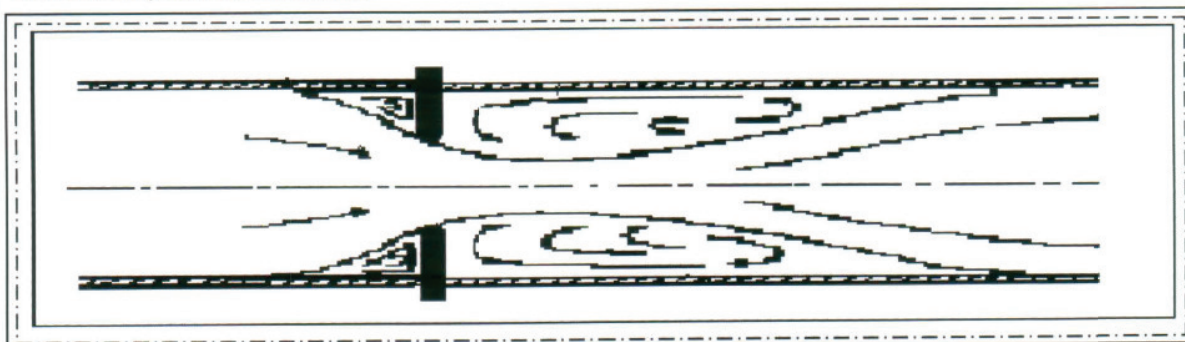
Energy saving regulating without diminished cross section by valve body and/or fix folding or diaphragm parts.

Regulation of trash

1 off IRIS-diaphragm control valve type BS DN 100 P in stainless steel execution 1.4408/1.4435, serial no. B 13297.



Favourable, central flow axis:



Dat. 19.06.2002

BS-967-04gb